

# CAPABILITY STATEMENT

## Company Overview

For over three decades Crum has emerged as a market leader in Collaborative Robotics, PLC Programming, Quality Fixtures, Formed Hose Tooling, and Formed Tube and Pipe.

Partnering with Crum is a vital step to realizing continuous improvement goals. Utilizing our extensive engineering experience and state of the art automation solutions, you will achieve your desired safety, quality, delivery, and cost objectives.

## Core Competencies

- Robotics Integration
- PLC Programming
- Quality Inspection Fixtures
- OEM Custom Machinery
- Custom Conveyors
- Control Panel Assembly
- 3D Programs and Designs
- Formed Tube and Pipe
- Formed Hose Tooling
- CMM Dimensional Inspection

## Past Performances

- |          |           |
|----------|-----------|
| Ford     | GM        |
| Chrysler | Toyota    |
| Valeo    | Whirlpool |

## Certifications

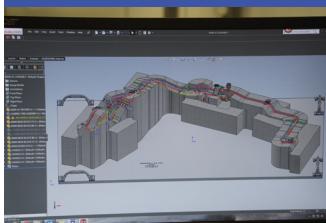
- ISO 9001-2008
- DUNS #195700943
- SAM CAGE Code: 57ZX3

## NAICS Codes

- 332996 332721
- 332710 541380
- 333514 333993
- 333922 541330
- 541340

## Differentiators

- Private family-owned business
- No bureaucracy
- Supply global markets
- Responsive. Adaptable. Professional.
- Quick turnaround times
- Outstanding safety record
- One-stop shop for your design and manufacturing needs.
- Accepts credit cards and purchase cards



Aaron Waldie: Sales Manager  
**419-878-9779**  
[crummfg.com](http://crummfg.com)

Fax: 419-878-5793  
1265 Waterville-Monclova Rd.  
Waterville, OH 43566

[sales@crummfg.com](mailto:sales@crummfg.com)